



# Maintenance instructions

## Gas condensing boilers

**MGK-130**  
**MGK-170**  
**MGK-210**  
**MGK-250**  
**MGK-300**



Contents .....	Page
Safety instructions .....	3-4
Maintenance procedure .....	5-7
Maintenance procedure MGK-130 .....	8-10
Maintenance procedure MGK-170/210/250/300 .....	11-12
Check/maintenance, components MGK-130 to MGK-300 .....	13-17
Neutralising system & siphon .....	18-20
Maintenance procedure, finalising .....	21-23
Function check .....	24
List of required parts .....	25
Overview of the steps to be taken and maintenance report .....	26-27
Installation, non-return valve for the MGK-130 (when replacing the fan) .....	28-30

The following symbols and references are used in conjunction with these important instructions concerning personal safety, as well as operational reliability.



"Safety instructions" are instructions with which you must comply exactly, to prevent risks and injuries to individuals and material losses.



Danger from 'live' electrical components!  
NB: Switch OFF the ON/OFF switch before removing the casing.

Never touch electrical components or contacts when the ON/OFF switch is in the ON position! This results in a risk of electrocution that may lead to injury or death.

The main supply terminals are 'live' even when the ON/OFF switch is in the OFF position.



Parts of boilers can get very hot; consequently there is a risk of serious burns.  
Therefore allow to cool down prior to installation work.



This requires an action.



Visual check.

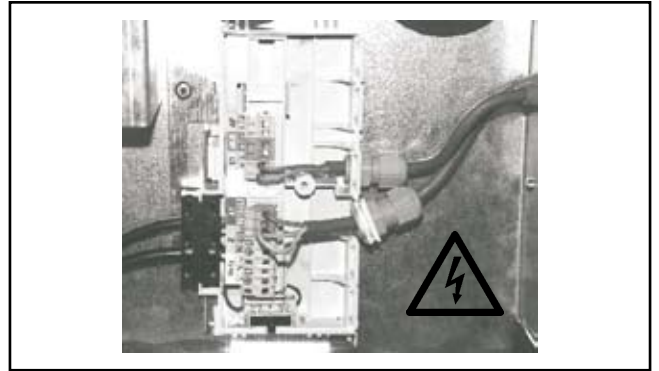


Fig.: Terminal box:  
Danger from electrical voltage.

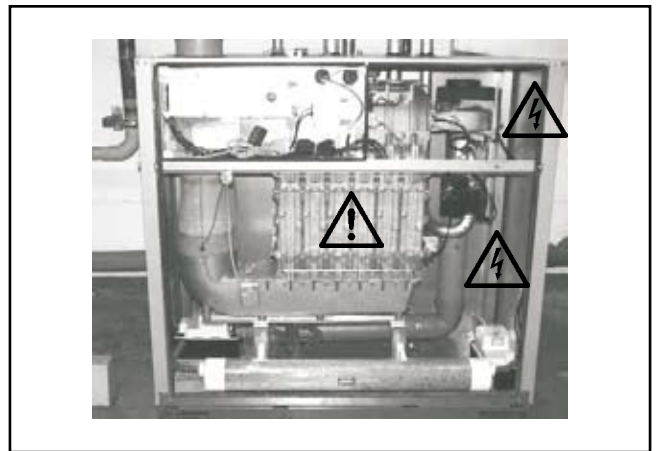


Fig.: Ignition transformer, high voltage ignition electrode, ionisation electrode, heat exchanger  
Danger from 'live' electrical components, risk of burning through hot components.

**NB**

**"NB" indicates technical instructions that you must observe to prevent material losses and malfunctions on the boiler.**

MGK-170/210/250/300



MGK-130



Fig.: Gas combination valve.

Danger from electrical voltage.

Escaping gas may cause poisoning or an explosion.



### General information

Maintenance work must only be carried out by a qualified heating contractor. Regular maintenance and the exclusive use of original Wolf spare parts are of crucial importance to the trouble-free operation and long service life of your appliance. We therefore recommend you arrange a maintenance contract with a local heating contractor.

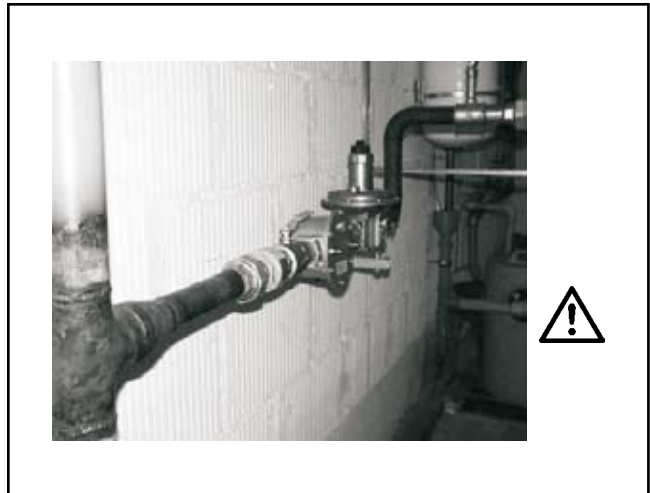
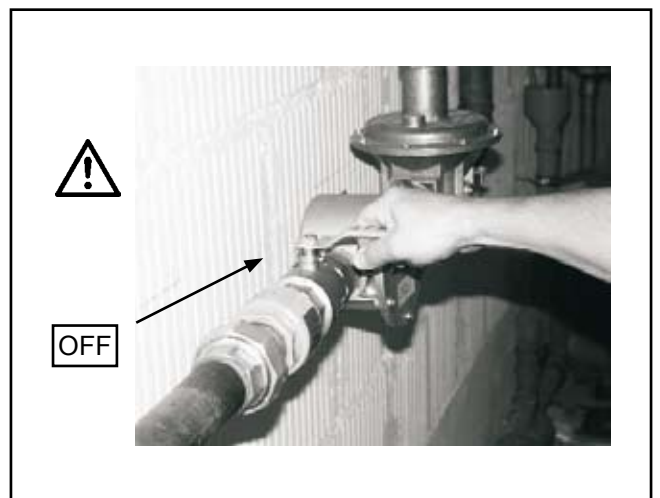
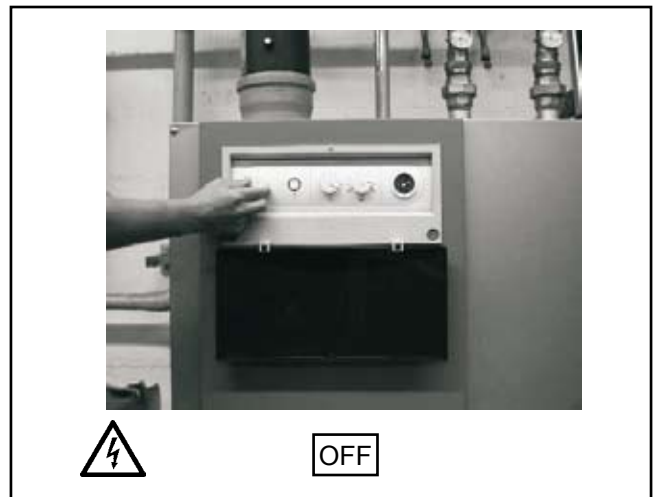


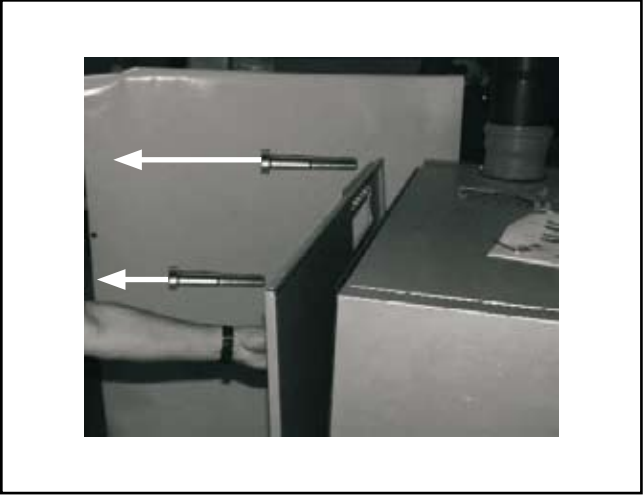
Fig.: Gas connection: Escaping gas may cause poisoning or the risk of explosion.



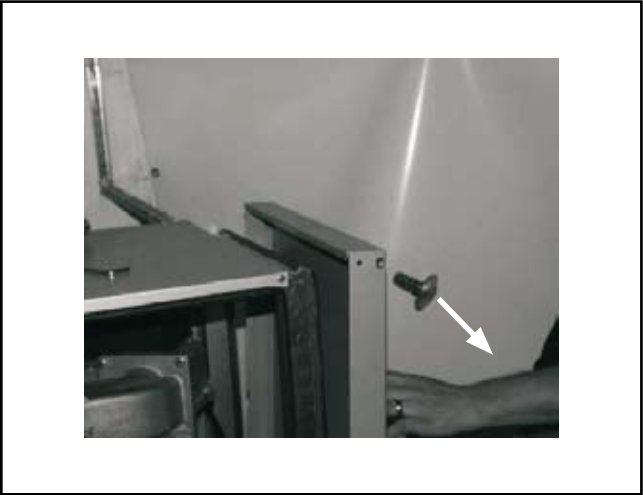
2 x



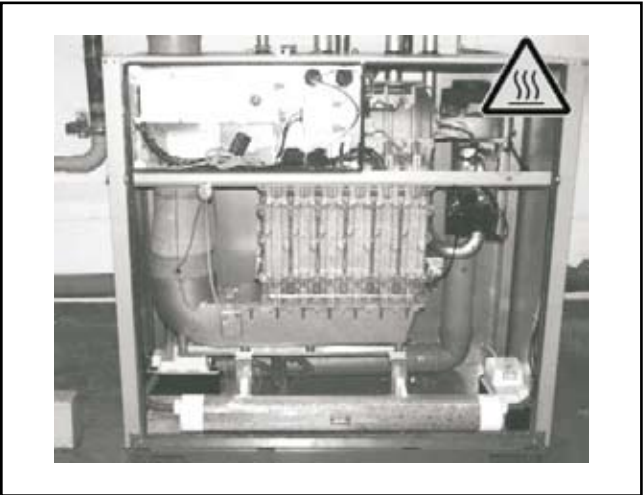
5 mm

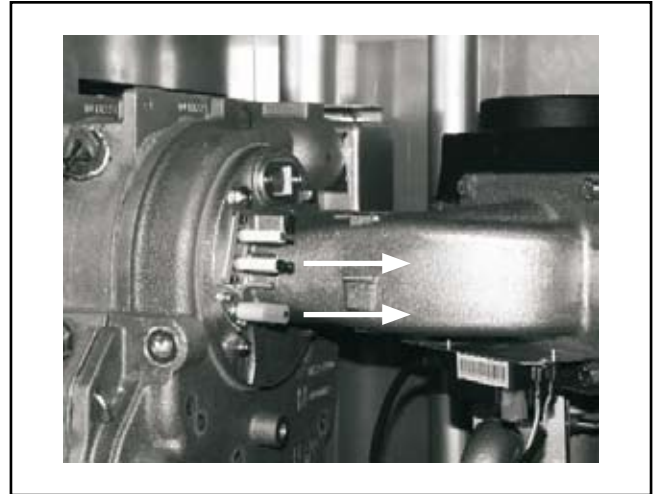


1 x



Allow to cool down for 1 hour.





4 x



3 mm

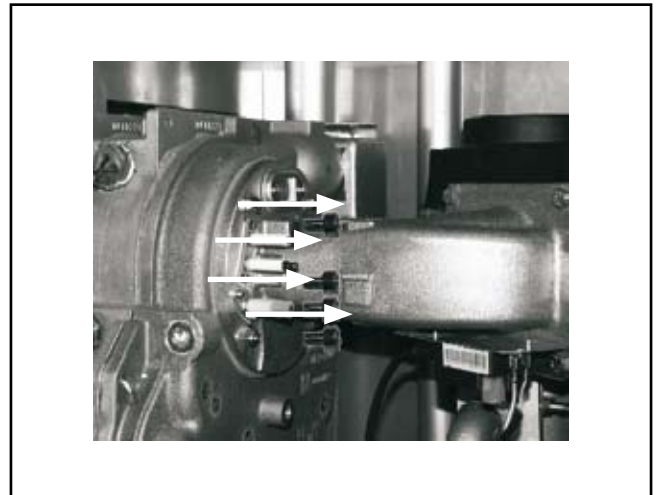




Fig.: Undo all electrical connections at the fan and the ignition transformer.

13 mm

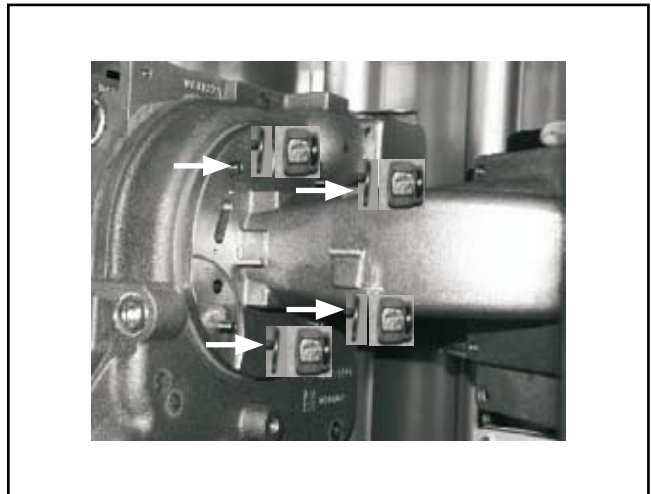


Fig.: Undo the screws between the fan and the mixing chamber.

4 x



13 mm





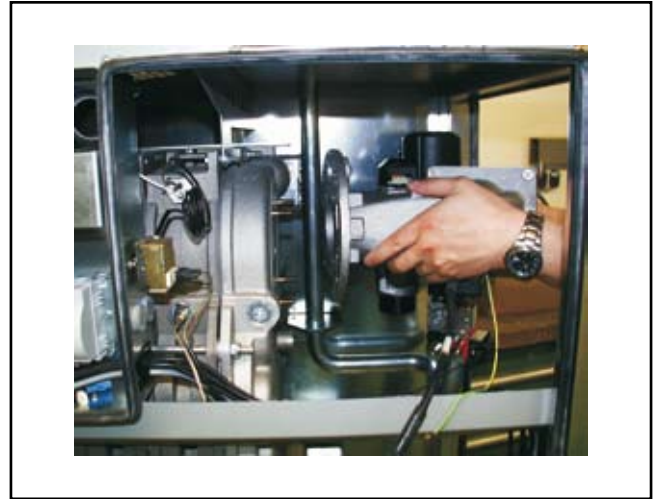


Fig.: Remove the unit comprising burner flange and fan.

6 mm



13 mm






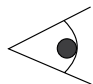
 Check that the non-return valve operates freely.



Fig.: Visual check, non-return valve.

 → Gasket, burner flange gasket.



Undo all electrical connections at the transformer and the fan.



Undo the mixing chamber from the fan.

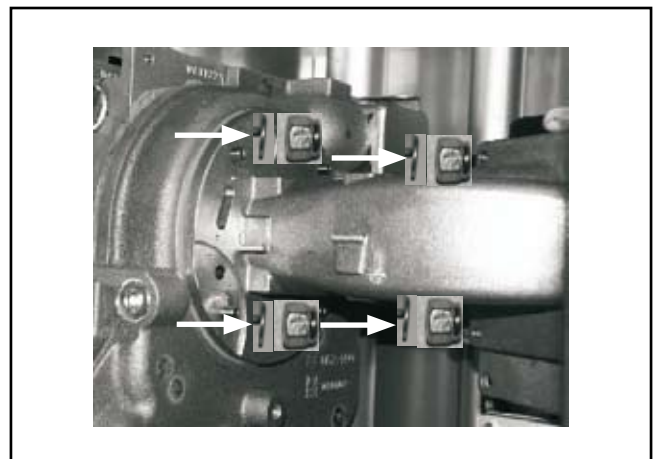
6 mm



4 x



13 mm



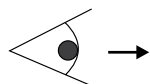
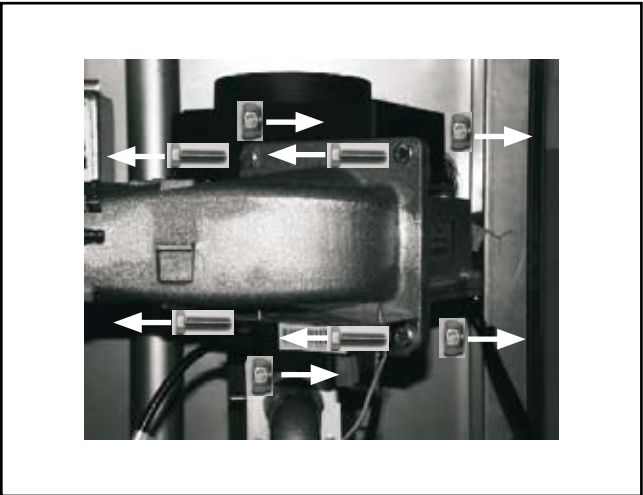
Remove the burner flange with the fan.

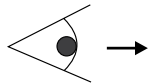
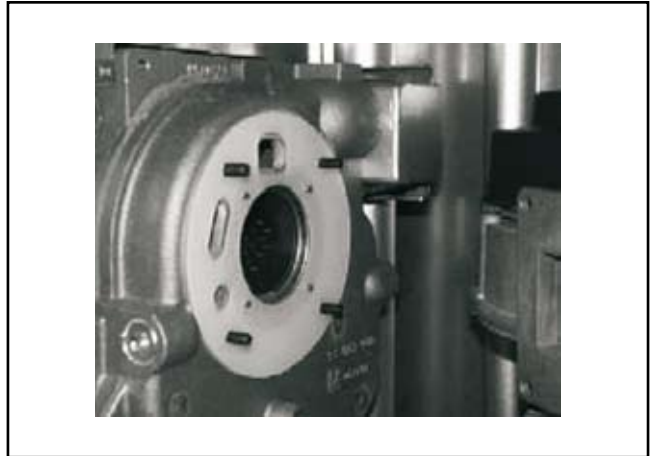


4 x



13 mm

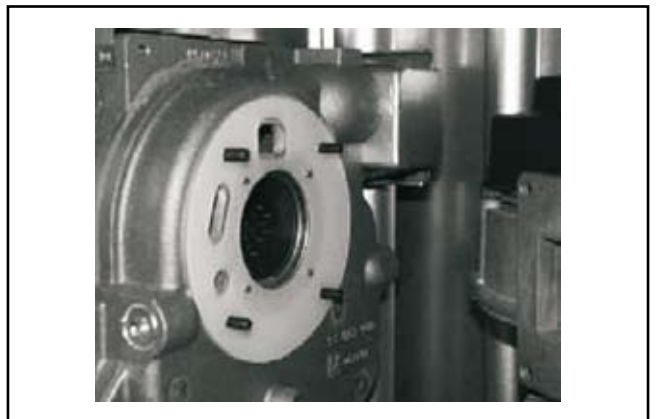




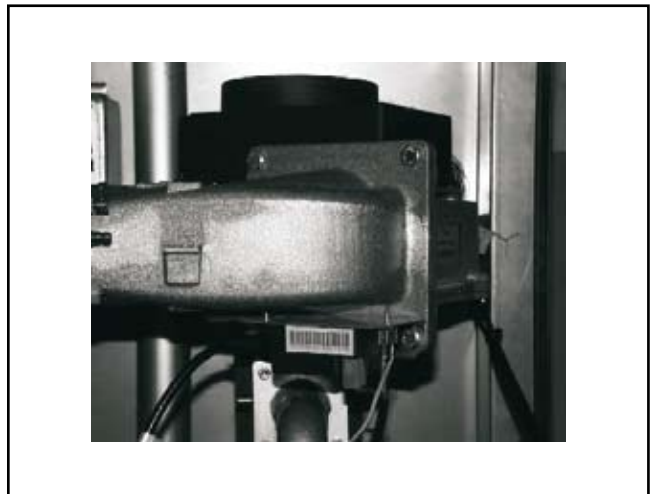
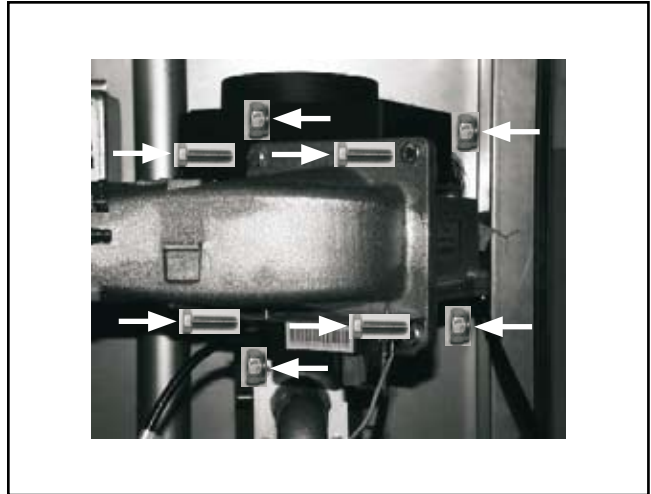
Flush the burner with tap water or compressed air if necessary.  
Shake out prior to installation.



Burner flange gasket, replace gasket if necessary.



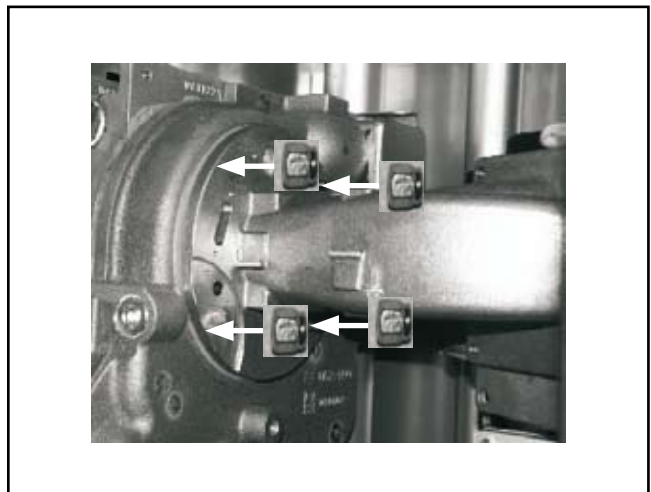
Secure the flange with gasket and ignition transformer on the fan.



4 x

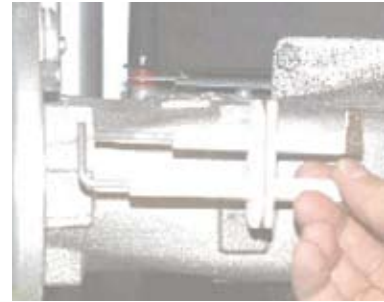


13 mm





**NB** Insert electrodes correctly  
Ignition electrode: Earth tab at the top  
Ionisation electrode: Orientation towards the burner.



Ignition electrode with gasket

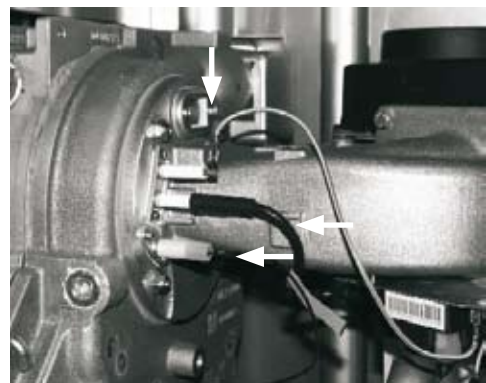
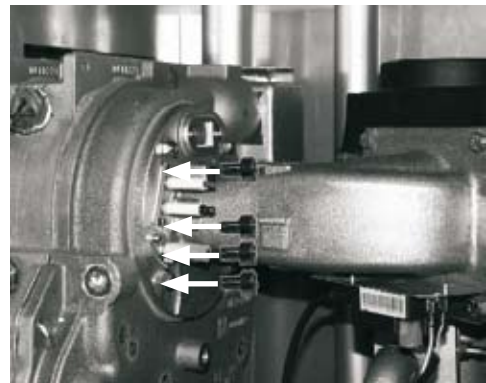


Monitoring electrode with gasket

4 x



3 mm



### Maintenance, cast iron boiler

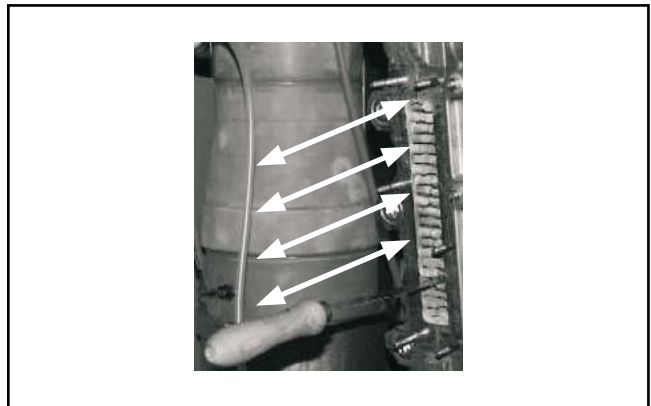
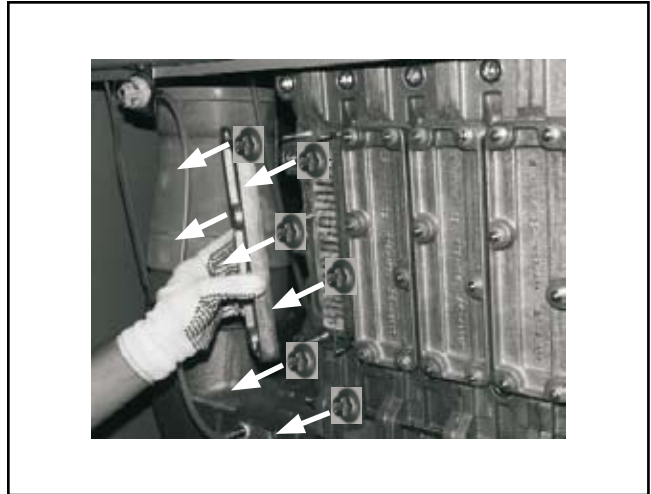
6 x



10 mm



Open all cleaning covers.



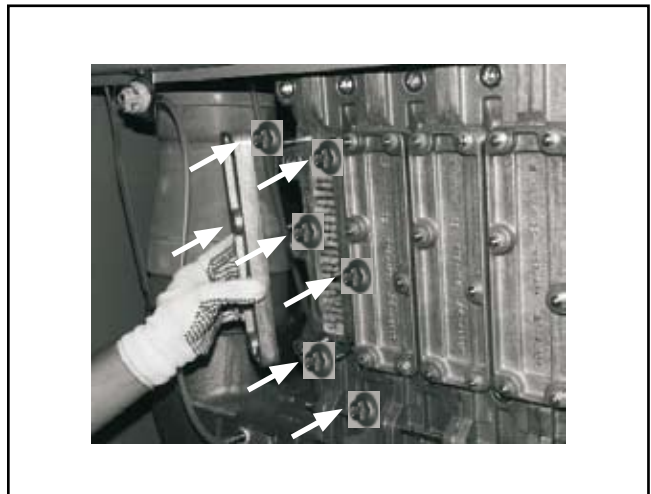
6 x



10 mm



Inspect the gasket visually and replace if necessary.





6 x



10 mm



Inspect the gasket visually and replace if necessary.



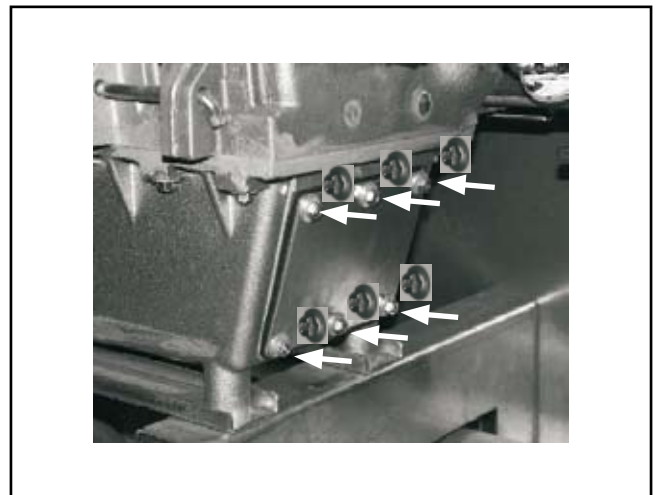
Clean the condensate pan with a wet vacuum cleaner.



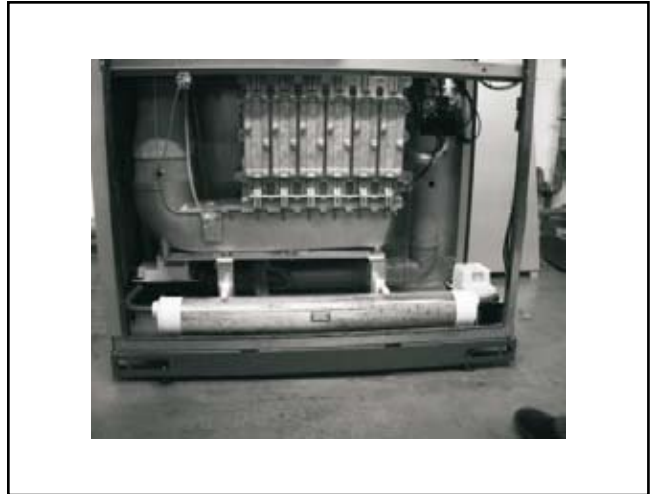
6 x



10 mm



- Check the condensate pump.
- Top up neutralising system and if necessary granulate.
- Check the condensate pump plug-in contact.
- Testing the pH value on the neutralising system drain.  
→ A pH value of  $< 7$  indicates that a service is required.
- **Visual check of the neutralising system:**  
→ A service is required if the granulate has a dark coating.  
→ A service is likely to be required if the level has fallen below the maximum level.



Remove the perforated sieve on one side and loosen up with the cleaning rod and if necessary water. Repeat the process on the other side.





Flush the granulate several times with water.



Flush empty tube with water.



**NB** Regularly top up with granulate.

Fill with new granulate pellets using a funnel and top up to the maximum level.

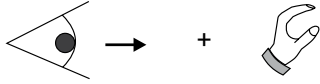


Fig.: Filling

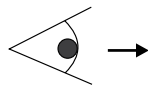


Clean and fill the siphon.

Visual check, flue gas routing.

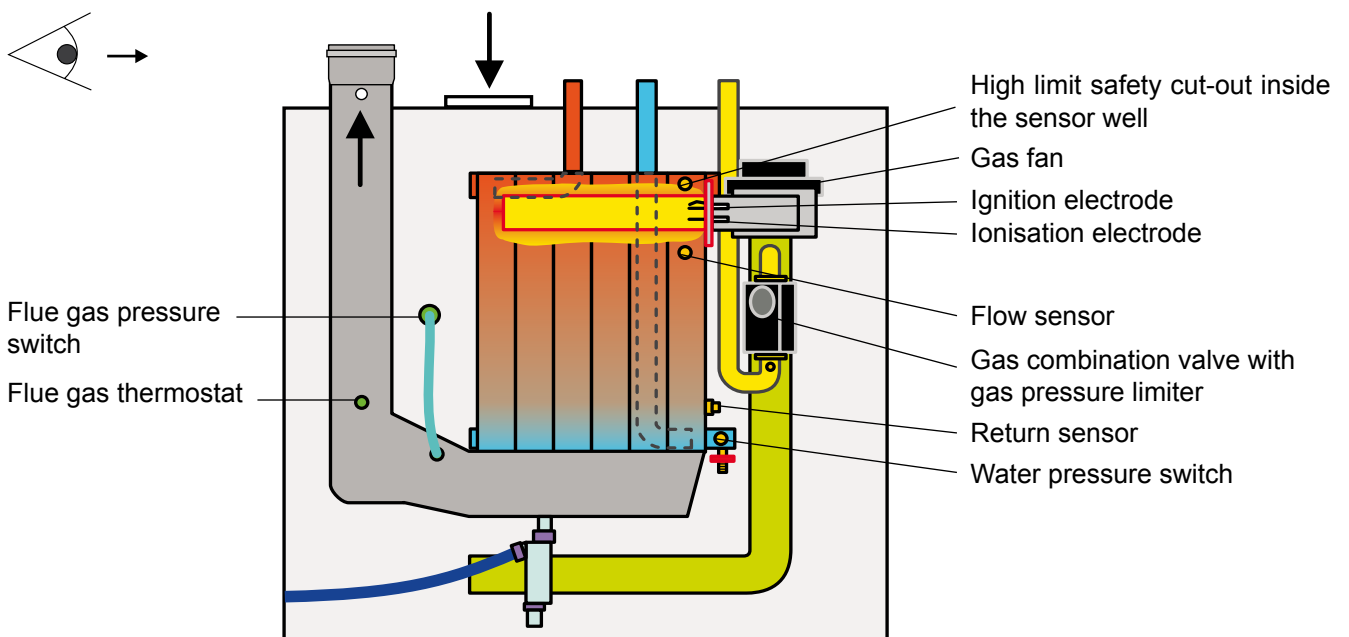
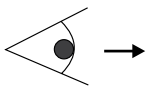


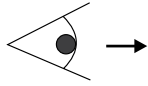
Visual check, air supply.



Visual check, electrical plug-in contacts.

**Diagram MGK**



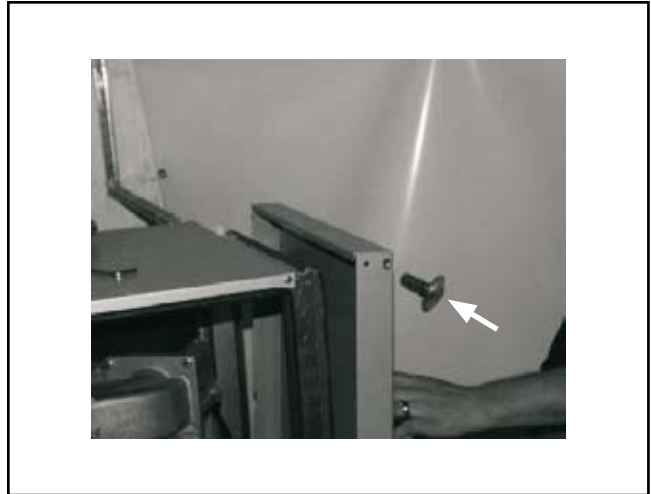


1 x



**NB**

Ensure that the casing gasket is correctly fitted.



2 x

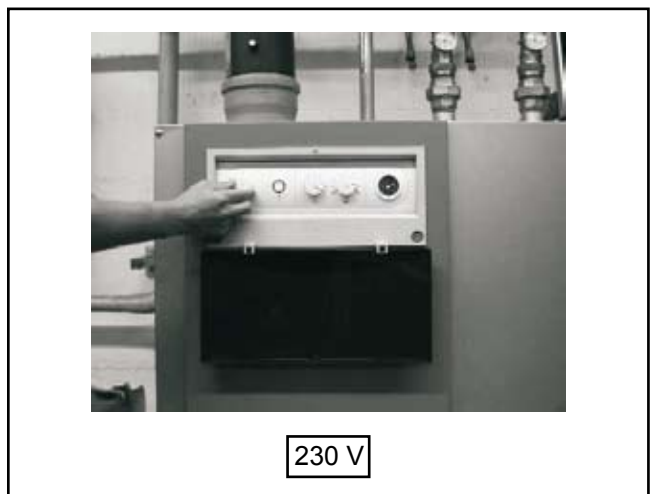
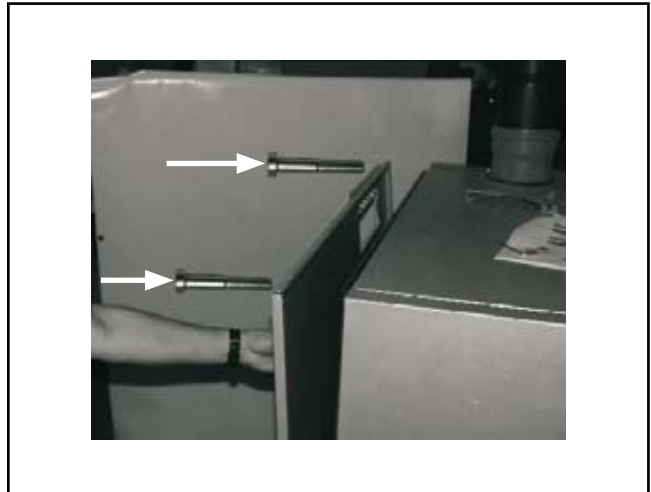


5 mm

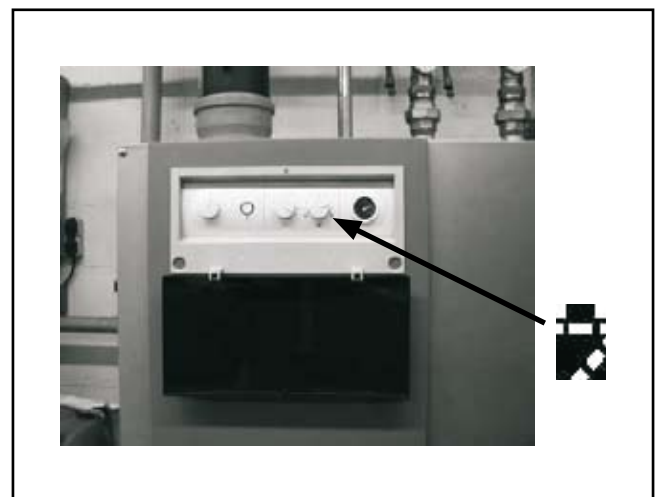
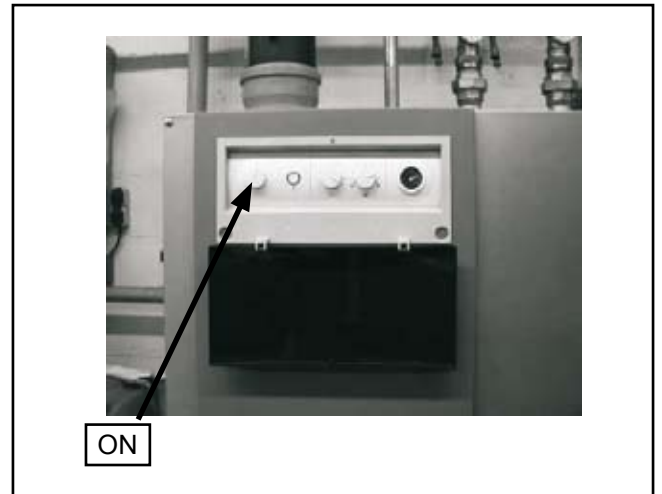
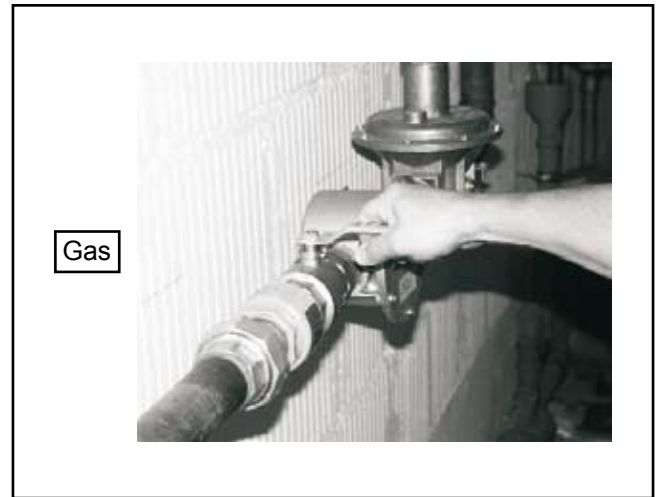


**NB**

Ensure that the casing gasket is tight.



230 V



### Function check

- a) Open gas tap and check for tightness up to the GCV with a leak detector.
- b) Start the boiler. The burner starts.
- c) Check the joint downstream of the GCV with a leak detector.
- d) Function check: Close the gas tap. Fault code 12 or indicator ring flashes red.
- e) Open gas tap, press reset button. The burner shuts down.
- f) Adjust parameters if changes from the factory settings are required.
- g) Check the function of control accessories.

### Flue gas test

Carry out the test in emissions test mode and enter the values in the maintenance report.

Re-adjust the CO<sub>2</sub> content if required (see also installation instructions).



### Control accessories check




Fig.: BM



Fig.: DWT



Fig.: AWT

- The display must show BUS connection .



BUS connection

### Maintenance requires the following:

1	MGK service set comprised of the following:	Part no. 8751280
	1 Burner flange gasket	
	1 Monitoring electrode	
	1 Monitoring electrode gasket	
	1 Ignition electrode	
	1 Ignition electrode gasket	
	1 Monitoring electrode protective hose	
	4 M4 x 8 screws	
1	Cleaning panel with handle	Part no. 2482879
1	Tester for BlmSchV test [Germany]	

### We recommend you include the following as part of your service kit:

1	Silicone grease	
	10 g tube	Part no. 8602264
	or 400 g tube	Part no. 3500103
1	Ignition cable	Part no. 2744304
1	Gasket, flue gas DN 150 f. MGK-130	Part no. 3910073
1	Gasket, flue gas DN 200 f. MGK-170/210/250/300	Part no. 3910060
1	Return sensor	Part no. 8751284
1	Flow sensor	Part no. 8601886
1	Flue gas temperature limiter	Part no. 8751200
1	Sealing cord, cleaning cover, cast block	Part no. 1668246
1	Gasket, cleaning cover, condensate pan	Part no. 3910071
1	Refill pack, 1.3 kg for neutralising system	Part no. 2400731
1	Service set, neutralising system, comprised of the following:	Part no. 2483182
	1 Cleaning rod (plastic)	
	100 pce pH test strips	

**Overview of the steps to be taken and maintenance report**

No.	Step	Report item
1	Switch OFF the boiler, emergency stop switch is OFF	
2	Isolate the system from the power supply	
3	Close the gas supply valve	
4	Remove the casing	
5	Unplug the electrical connections from the monitoring and ignition electrodes	
6	Replace the electrodes	
7	Change the gaskets	○
8	Visual check of the burner unit	○
9	Remove the cleaning apertures	○
10	Clean the heating water heat exchanger	○
11	Clean the condensate pan	○
12	Check and if necessary refill granulate, if a neutralising system is installed	○
13	Clean and fill the siphon, install and check for firm seating	○
14	Check electrical plug-in contacts	○
15	Check all lines that carry gas or water for the following: Tightness, corrosion, ageing	
16	Visual check, expansion vessel	○
17	Check function of safety equipment (safety valve)	○
18	Check ventilation air apertures	
19	Open the gas supply	
20	Start the boiler	
21	Flue gas leak test	
22	Check the ignition	
23	Check for clear ventilation air intake	
24	Check the interaction with control accessories	
25	Flue gas test in emissions test mode	
26	Gross flue gas temperature	
27	Inlet air temperature air temperature	
28	Net flue gas temperature	
29	Carbon dioxide content (CO <sub>2</sub> )	
30	or oxygen content (O <sub>2</sub> )	
31	Carbon monoxide content (CO)	
32	Flue gas loss	

Confirm maintenance (company stamp, signature)

Date \_\_\_\_\_

**Overview of the steps to be taken and maintenance report**

<b>No.</b>	<b>Step</b>	<b>Report item</b>
1	Switch OFF the boiler, emergency stop switch is OFF	
2	Isolate the system from the power supply	
3	Close the gas supply valve	
4	Remove the casing	
5	Unplug the electrical connections from the monitoring and ignition electrodes	
6	Replace the electrodes	
7	Change the gaskets	O
8	Visual check of the burner unit	O
9	Remove the cleaning apertures	O
10	Clean the heating water heat exchanger	O
11	Clean the condensate pan	O
12	Check and if necessary refill granulate, if a neutralising system is installed	O
13	Clean and fill the siphon, install and check for firm seating	O
14	Check electrical plug-in contacts	O
15	Check all lines that carry gas or water for the following: Tightness, corrosion, ageing	
16	Visual check, expansion vessel	O
17	Check function of safety equipment (safety valve)	O
18	Check ventilation air apertures	
19	Open the gas supply	
20	Start the boiler	
21	Flue gas leak test	
22	Check the ignition	
23	Check for clear ventilation air intake	
24	Check the interaction with control accessories	
25	Flue gas test in emissions test mode	
26	Gross flue gas temperature	
27	Inlet air temperature air temperature	
28	Net flue gas temperature	
29	Carbon dioxide content (CO <sub>2</sub> )	
30	or oxygen content (O <sub>2</sub> )	
31	Carbon monoxide content (CO)	
32	Flue gas loss	

Confirm maintenance (company stamp, signature)

Date \_\_\_\_\_



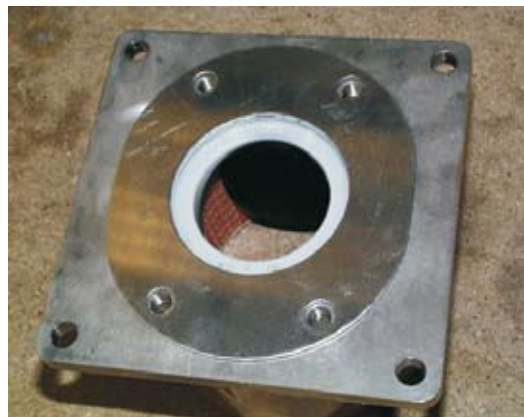
Insert the non-return valve into the adaptor.



Position gasket onto the non-return valve.



Position the mating panel onto the adaptor, taking account of the hole pattern.





Position gasket onto the mating panel.



Fit the complete unit on the RG 175 fan.

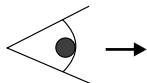
13 mm



4 x

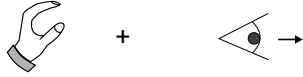


View of the fully fitted non-return valve.



Non-return valve closed in the fitted position.





Check that the non-return valve operates freely.

Fig.: Visual check, non-return valve.



